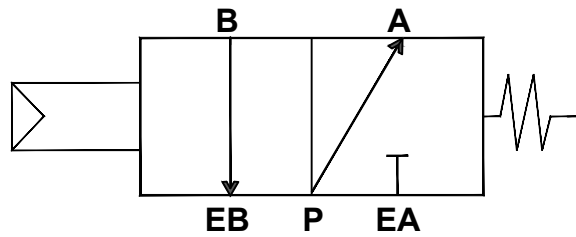
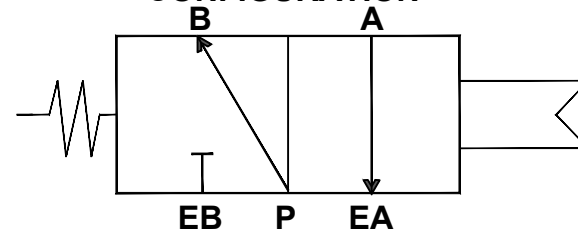


**STANDARD  
CONFIGURATION**



**OPTIONAL  
CONFIGURATION**



**B N 4 S — C S 2 2 R**

**BODY:**

B = Black Anodized  
C = Clear Anodized  
N = Nickel Infused  
S = 304 Stainless Body

**MOUNTING:**

N = Namur Mount

**MODEL:**

3 = Three-Way  
4 = Four-Way

**SOLENOID POSITION:**

S = Single  
D = Double

**CONFIGURATION:**

R= OPTIONAL  
(BLANK) = STANDARD

**VOLTAGE:**

1 = 110 VAC  
2 = 24 VDC  
12 = 12 VDC  
22 = 220 VAC  
24 = 24 VAC

**ELECTRICAL TERMINATION:**

C = 1/2" Conduit  
D = Din Connector  
EX = Explosion Proof  
CS = Cord Set with two-meter wire lead  
P = Air Piloted



DRAWING NAME:

**NAMUR VALVE MATRIX**

MATERIAL:	<b>A</b>	DRAWING NUMBER: NAMUR VALVE MATRIX	REV. <b>1</b>
SCALE: N.T.S.	NAME: MJB/MCH	DATE:	10-26-16